



# **CENTRAL MACHINE & FABRICATION**

**Division of Central Industrial Supply, Inc.**



**P.O. BOX 210**

**250 SPRING DRIVE & HIGHWAY 25 SOUTH  
MONTEVALLO, ALABAMA 35115**

**ROLLER MILL PARTS & SERVICE  
STEEL FABRICATION • MACHINE WORK  
EQUIPMENT & MACHINERY REPAIR  
CONVEYORS • CHUTEWORK**

**205-665-4516 • FAX: 665-4518**

**1-888-665-4516**

**[www.centralmachineandfab.com](http://www.centralmachineandfab.com)**

# HISTORY

Central Machine and Fabrication, a division of Central Industrial Supply, Inc., was established and incorporated under the laws of the state of Alabama in 1976. The company has been at its present location in Montevallo, Alabama since 1979. We are a manufacturing facility providing a full range of fabrication and machining services from materials including steel, stainless steel, aluminum, and alloys. Our services are concentrated in the cement, lime and pulp & paper, and steel industries.

With our manufacturing capabilities we have built complete material handling systems, custom designed machinery and equipment as well as structural and platework projects. We have built an extensive background in repairing and rebuilding a broad range of industrial equipment and machinery such as roller mills, crushers, screening equipment, and foundry machinery. Our well equipped facility exceeds 25,000 square feet of manufacturing area. This area is serviced by 5 overhead cranes ranging from 3 ton to 10 capacity. Our facility is complimented by approximately 25 skilled, innovative and quality minded employees.

No job is too large or small. We are dedicated to offer our clients quality work at a competitive rate that will allow them to remain competitive in their business.

## PARTIAL LISTING OF CUSTOMERS

**IMERYS PIGMENTS & ADDITIVES  
CHEMICAL LIME CO.  
FRANKLIN INDUSTRIAL MINERALS  
CERTAINTED CORPORATION  
GLOBAL STONE  
TAMKO ROOFING PRODUCTS  
GEORGIA GULF SULPHUR  
KENTUCKY-TENNESSEE CLAY  
WADE SAND & GRAVEL  
FESCO INTERNATIONAL, INC.  
LA FARGE  
CARMEUSE LIME & STONE  
SEAMAN TIMBER COMPANY  
ALABAMA RIVER PULP**

**CORPS OF ENGINEERS  
BE & K CONSTRUCTION CO.  
RSG, INC.  
ALABAMA POWER COMPANY  
TEKSID ALUMINUM COMPONENTS  
ALABAMA BRIDGE BUILDERS  
VULCAN MATERIALS  
WEYERHAEUSER  
MACLEAN POWER SYSTEMS  
HUBBELL POWER SYSTEMS  
INTERNATIONAL PAPER CO.  
U.S. PIPE & FOUNDRY**

# 25,000 SQUARE FEET MANUFACTURING FACILITY

SERVING THE CEMENT, LIME AND PULP & PAPER, AND STEEL INDUSTRIES SINCE 1976

## MACHINERY LIST

### LATHES

34" x 240" VDF  
21/32 x 120" Colchester  
15" x 50" Jet  
21"/33" x 120" Tarnow  
17" x 80" Colchester  
16" x 60" Colchester  
16" x 60" Monarch  
20" x 60" CNC Lathe  
30" x 120" CNC Lathe

### MILLS

#4 Horizontal  
#3 Universal  
Cincinnati Universal  
New Port Universal  
48" x 168" Planer Mill  
52" Vertical Boring Mill  
72" Vertical Boring Mill  
120" Vertical Boring Mill  
3" Horizontal Boring Mill  
4" Horizontal Boring Mill  
5" Horizontal Boring Mill  
20" x 40" Mazak CNC Mill  
22" x 50" CNC Mill

### MISCELLANEOUS

1 1/4" Keyseater  
16" Hydraulic Shaper  
6" x 18" Surface Grinder  
9" x 18" Horizontal Band Saw  
36" Vertical Band Saw  
250 Ton Forcing Press  
100 Ton Forcing Press  
60" Radial Arm Drill  
84" Radial Arm Drill  
250 Ton Horizontal Wheel Press  
2" Pipe Threader

## FABRICATION EQUIPMENT

16' 650 Ton Press Brake	Mig Welders
12' 300 Ton Press Brake	Tig Welders
10' x 1/2 Plate Shear	Sub-Arc Welders
10' x 1/2 Plate Roll with Angle Attach.	Welding Positioner
80 Ton Hyd. Web Punch	Welding Manipulator
100 Ton Hyd. Flange Punch	Conventional Welders
60" Pipe Burning Machine	Plasma Burner 100 AMP
36" Template Burning Machine	1 Bridge Crane 6,000 #Cap
10' Portable Track Burner	2 Bridge Cranes 10,000 #Cap
Arc-Gougers	2 Bridge Cranes 20,000 #Cap

**\*\* PICK UP & DELIVERY AVAILABLE**

## PLATEWORK & SUPPORT STEEL FABRICATION EQUIPMENT FABRICATION & RE-BUILDS

### MACHINE WORK

CNC  
CONVENTIONAL  
GRINDING  
KEYSEATING  
BORING  
TURNING  
MILLING  
DRILLING

### FABRICATION

PLATEWORK  
SUPPORT STEEL  
CONVEYERS  
CHUTEWORK  
DUCTWORK  
HOPPERS  
SILOS  
BINS

### WE DO REPAIR WORK ON:

RAYMOND ROLLER MILLS  
\* Mill Bases  
\* Mill Bottoms  
\* Gear Housings  
\* Journal Parts, Etc.  
BOWL MILLS  
FOUNDRY EQUIPMENT  
VIBRATING SCREENS

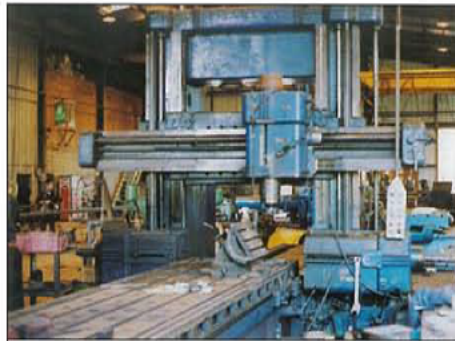
**QUALITY • SERVICE • DEPENDABILITY • 24/7**

**\*\*\* FAX US YOUR REQUEST FOR QUOTATION & COMPARE OUR PRICES \*\*\***

# SHOP EQUIPMENT



**4" HORIZONTAL BORING MILL**



**48" X 168" PLANER MILL**



**PLATE SHEAR 1/2" X 120"  
12' 300 TON PRESS BRAKE  
16' 650 TON PRESS BRAKE**



**120" VERTICAL BORING MILL**



**5" HORIZONTAL BORING MILL**



**LATHES**



**34" X 240" VDF LATHE**

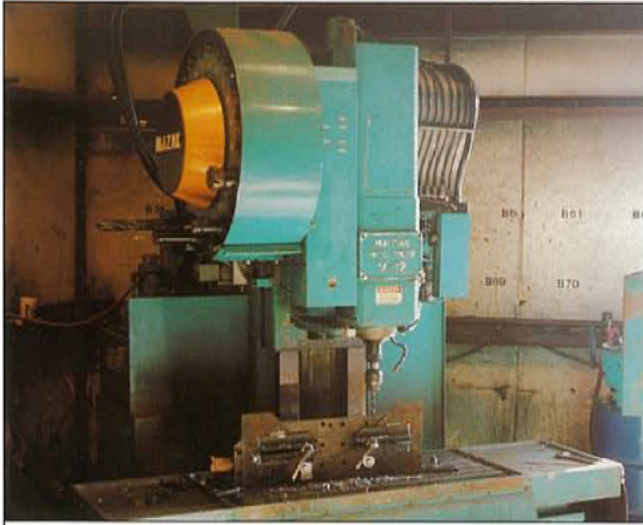


**PLATE ROLL 1/2" X 120"**



**PUNCH/SAW LINE**

# CNC EQUIPMENT



**20" X 40" MAZAK CNC MILL**



**20" X 60" MAZAK CNC LATHE**



**22" X 50" CNC MILL**



**30" X 120" CNC LATHE**



# CENTRAL MACHINE & FABRICATION



*SINCE 1976*

P.O. BOX 210 • MONTEVALLO, ALABAMA 35115  
PH. 205-665-4516 • 1-888-665-4516 • FAX 205-665-4518

## RAYMOND® ROLLER MILL REPLACEMENT PARTS AND SERVICES 73" 66" & 50" ROLLER MILLS

### PARTS

Plow Holders  
Plow Bodies  
Plow Tips  
Port Liners  
Journal Shafts  
Journal Heads  
Upper Journal Housings  
Lower Journal Housings  
Bushings  
Wear Rings  
Grinding Rolls  
Roll Bolts  
Gaskets  
Mill Shafts  
Mill Bottoms  
Bull Rings  
Spiders  
Return Air Housings  
Mill Side Assembly  
Etc.

### SERVICES

In stock replacement parts  
Repair bushing fits in mill bottoms  
Machine & install wear liners in mill bottoms  
Repair bull ring fit in mill bases  
Rebuild journals  
Repair bushing fits in gear housings  
Hard surfacing of wear parts

Also available: Whizzer housings, plates, & blades  
Mill feed conveyors, ductwork, chutework, etc.

CALL OR SEND FAX TO SALES FOR INFORMATION AND PRICES  
OR EMAIL: [sales@centralmachineandfab.com](mailto:sales@centralmachineandfab.com)

# ROLLER MILL PARTS & SERVICES



**50" MILL BOTTOM CASTING  
READY TO BE MACHINED**



**50" MILL BOTTOM CASTING  
BEING MACHINED**



**REPAIRING BUSHING FIT & REPLACING  
WEAR PLATES IN 73" MILL BOTTOM**



**REPAIRED 73" MILL BOTTOM**

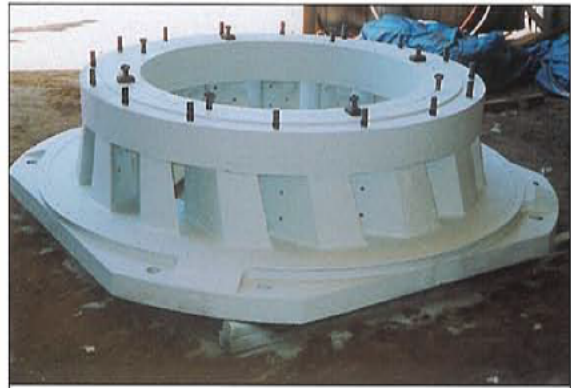


**73" RAYMOND® ROLLER MILL GEAR HOUSING BEING REPAIRED**

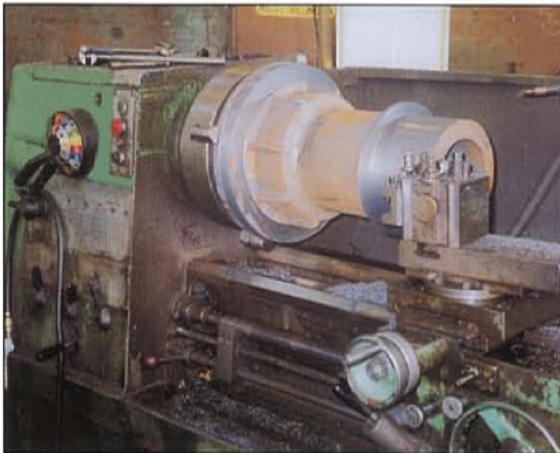
# ROLLER MILL PARTS & SERVICES



**MACHINING SLEEVE FOR 73"  
RAYMOND® ROLLER MILL BASE**



**SLEEVE AND BULL RING  
ASSEMBLED IN BASE  
READY TO SHIP BACK TO CUSTOMER**



**73" UPPER JOURNAL HOUSING  
CASTING**



**50" & 66" JOURNAL HEAD  
CASTINGS READY TO BE MACHINED**



**REPAIRED JOURNAL HEADS  
FOR 73" MILL**



**REPAIRED 50" MILL  
GEAR HOUSING**

# ROLLER MILL PARTS & SERVICES



**66" JOURNAL SHAFTS MACHINED & READY TO SHIP OUT TO CUSTOMER**



**MISC. ROLLER MILL PARTS, BUSHINGS, OIL PUMP, ETC.**



**FABRICATED SPIDER PLATE FOR 73" RAYMOND® ROLLER MILL**



**50" & 66" BULL RINGS IN STOCK - READY TO SHIP**



**REPAIRED 73" MILL GEAR HOUSING  
REPAIRED 66" PLOW SUPPORT  
NEW FABRICATED WHIZZER SECTION**



**MISC. ROLLER MILL PARTS REPAIRED AND ON THE WAY BACK TO CUSTOMER**



**WIND BOX & HIGH WALL FOR 50" RAYMOND® ROLLER MILL**

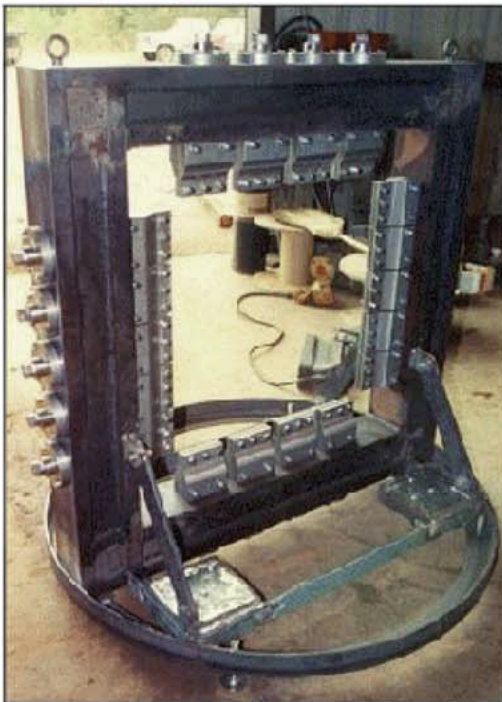
# MACHINE WORK



**MACHINED ALUMINUM CASTINGS**



**MACHINING TRUNNION  
ROLL FOR A LIME KILN**



**IMPACT TEST JIG**



**GUIDE WHEELS FOR MOORING BITS**



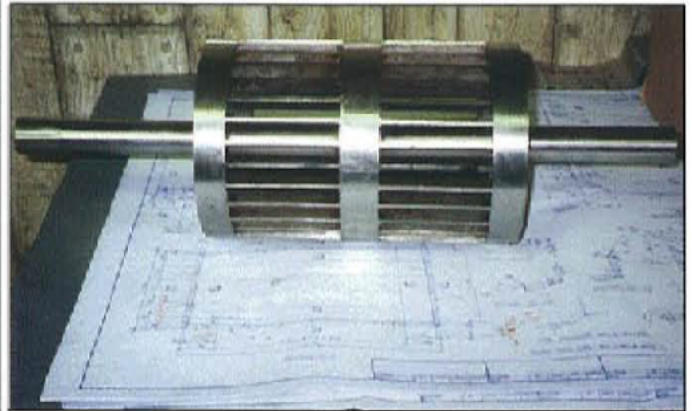
**HEADSHAFT DRIVE ASSEMBLY FOR  
BUCKET ELEVATOR**



**CHIPPER FEED ROLL**



**MACHINING ACS-80 CLASSIFIER ROTOR**



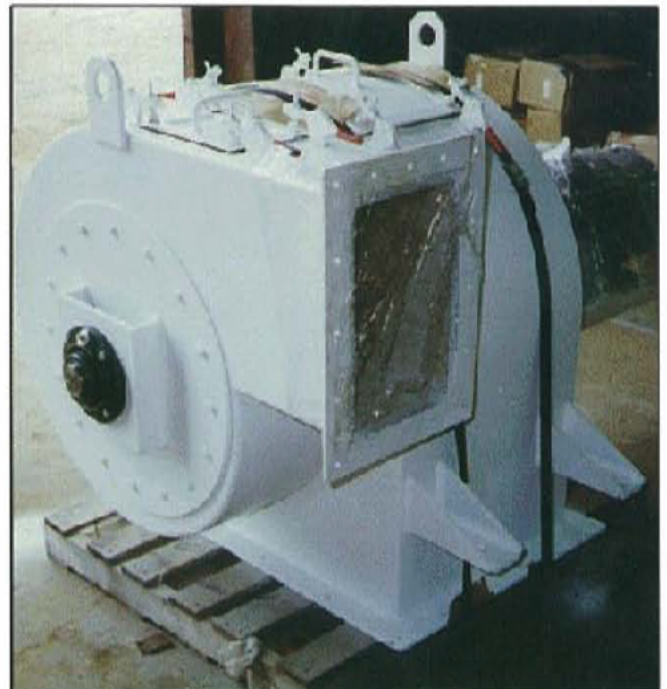
**STAINLESS STEEL ACS-15 TD ROTOR**



**ACS-50 TD CLASSIFIER**



**ACS-50 TD ASSEMBLED & TEST RUN  
FOR CUSTOMER**



**ACS-80 CLASSIFIER**



**CLASSIFIER HOUSINGS BEING SET UP TO MACHINE &  
ASSEMBLY OF CLASSIFIER ROTOR**

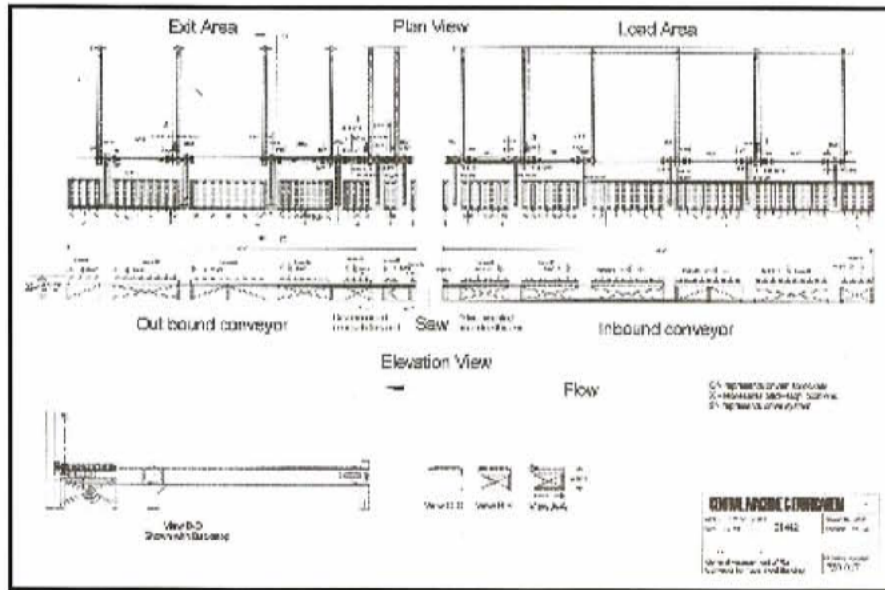


**MCS-500 & MCS-750 CLASSIFIERS  
READY TO SHIP**



**ASSEMBLY OF MCS-350 CLASSIFIER**

# MATERIAL HANDLING SYSTEM FOR STEEL SERVICE CENTER



**CONVEYOR ROLLS ASSEMBLED  
WITH BEARINGS**



**FITTING & WELDING CONVEYOR FRAMES**



**ASSEMBLING ROLLS TO CONVEYOR FRAMES**



**ASSEMBLING CHAIN DECKS**



**CHAIN DECKS READY TO SHIP TO CUSTOMER**



**SCREENING TOWER**



**8' X 60' CONVEYOR SUPPORT COLUMN**



**SCRUBBER STACK & CONE BASE**



**ROCKBOX CHUTE**



**CHUTEWORK**



**FEED HOPPERS**



**CEMENT SILO**



**CYCLONE**



**CURVED CONVEYOR SECTION FOR RADIAL STACKER**



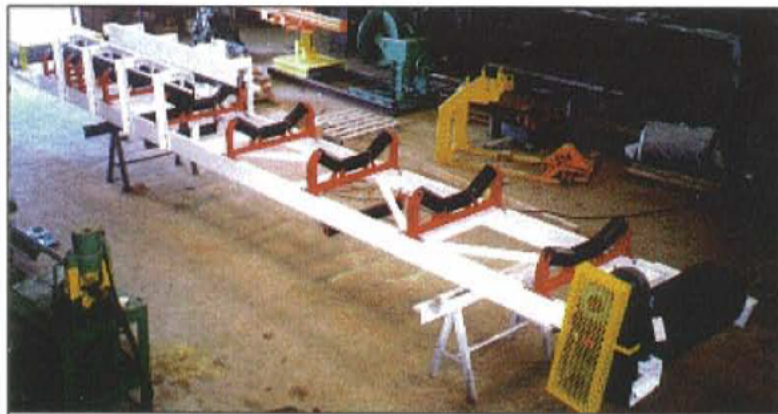
**CONVEYOR HEAD CHUTE**



**SLIDER BELT CONVEYOR**



**SPLITTER CHUTE**



**BELT CONVEYOR**



**SCREEN CHUTES BEING LINED WITH UHMW**



**SHIPPING FABRICATED SCREEN CHUTES**



**FOUNDRY CORE BLOW MACHINE AFTER  
BEING REBUILT & UPGRADED**



**RAIL WHEEL TREAD QUENCH MACHINE BUILT  
PER CUSTOMER DESIGN**



# 250 SPRING DRIVE & HIGHWAY 25 SOUTH

205-665-4516 • FAX: 665-4518

1-888-665-4516

www.centralmachineandfab.com

## DIRECTIONS

FROM BIRMINGHAM

I-65 SOUTH TO STATE 25 (EXIT 228) -  
**21 MILES**

SOUTH ON STATE 25 TO CALERA -  
**1 MILE**

SOUTH ON STATE 25 TO MONTEVALLO -  
**6 MILES**

LEFT ON SPRING DRIVE (2ND LEFT PAST  
S.R. 119 INTERSECTION)

